



AVON | WEST  
STRATFORD

# The Edison

Square Footage: 1,768

Bedrooms: 3

Bathrooms: 2.5

Stores: 2

Lot Width: 40 ft.

3 bedroom, 2 storey, single car garage door, 2 1/2 baths, open concept main floor, large master ensuite, oversized second floor laundry.



Division of Werner Bromberg Ltd.

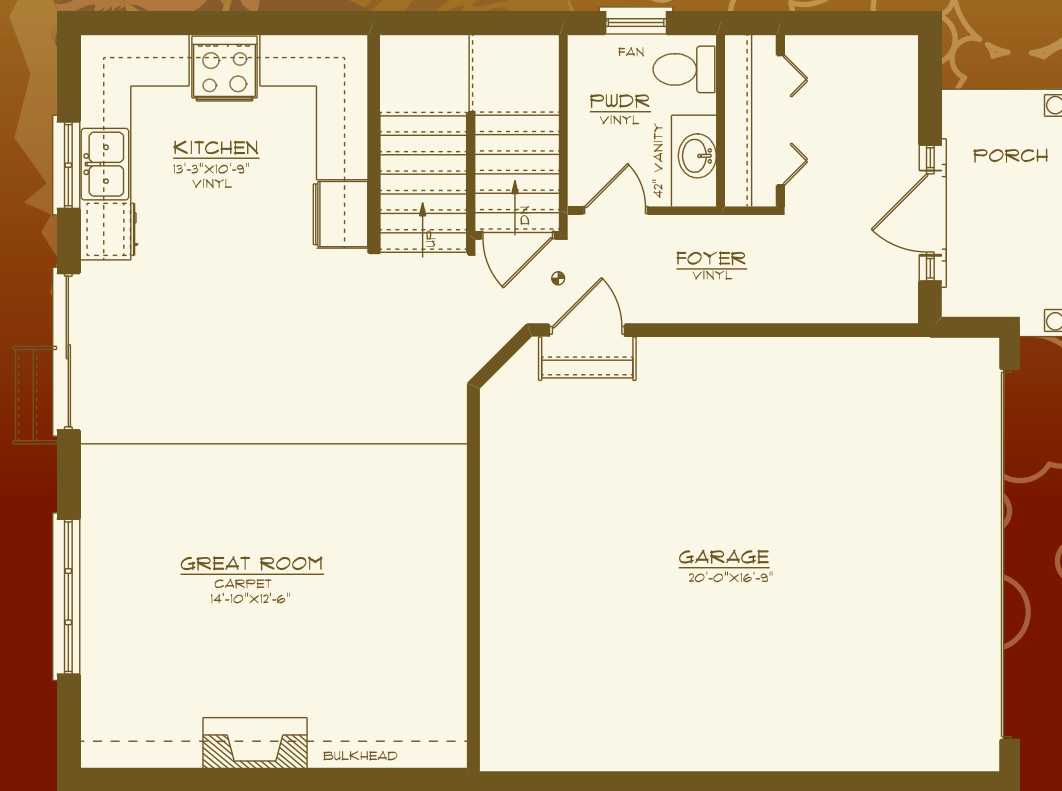




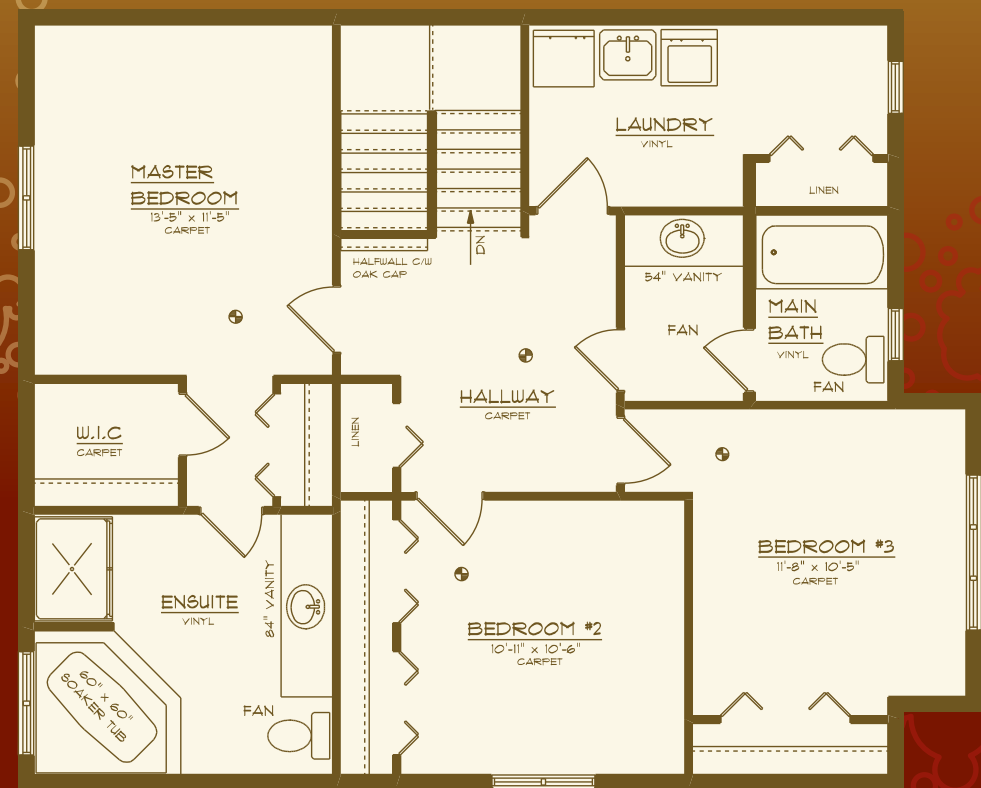


# The Edison 1,768 sq. ft.

AVON | WEST  
STRATFORD



Main Floor  
711 Sq. Ft.



Upper Floor  
1,057 Sq. Ft.

All drawings are artist concepts of the final product and may be revised and/or improved as necessitated by Architectural controls. All floor plans are approximate dimensions. Floor areas shown include "open to below" but do not include garage or basement areas. E. & O. E.

